

## Research

# The contributions from the progenitor genomes of the mesopolyploid Brassiceae are evolutionarily distinct but functionally compatible

Yue Hao,<sup>1</sup> Makenzie E. Mabry,<sup>2</sup> Patrick P. Edger,<sup>3,4</sup> Michael Freeling,<sup>5</sup> Chunfang Zheng,<sup>6</sup> Lingling Jin,<sup>7</sup> Robert VanBuren,<sup>3,8</sup> Marivi Colle,<sup>3</sup> Hong An,<sup>2</sup> R. Shawn Abrahams,<sup>2</sup> Jacob D. Washburn,<sup>9</sup> Xinshuai Qi,<sup>10</sup> Kerrie Barry,<sup>11</sup> Christopher Daum,<sup>11</sup> Shengqiang Shu,<sup>11</sup> Jeremy Schmutz,<sup>11,12</sup> David Sankoff,<sup>6</sup> Michael S. Barker,<sup>10</sup> Eric Lyons,<sup>13,14</sup> J. Chris Pires,<sup>2,15</sup> and Gavin C. Conant<sup>1,16,17,18</sup>

<sup>1</sup>Bioinformatics Research Center, North Carolina State University, Raleigh, North Carolina 27695, USA; <sup>2</sup>Division of Biological Sciences, University of Missouri–Columbia, Columbia, Missouri 65211, USA; <sup>3</sup>Department of Horticulture, Michigan State University, East Lansing, Michigan 48824, USA; <sup>4</sup>Genetics and Genome Sciences, Michigan State University, East Lansing, Michigan 48824, USA; <sup>5</sup>Department of Plant and Microbial Biology, University of California, Berkeley, California 94720, USA; <sup>6</sup>Department of Mathematics and Statistics, University of Ottawa, Ottawa, Ontario K1N 6N5, Canada; <sup>7</sup>Department of Computer Science, University of Saskatchewan, Saskatoon, Saskatchewan S7N 5C9, Canada; <sup>8</sup>Plant Resilience Institute, Michigan State University, East Lansing, Michigan 48824, USA; <sup>9</sup>Plant Genetics Research Unit, USDA-ARS, Columbia, Missouri 65211, USA; <sup>10</sup>Department of Ecology and Evolutionary Biology, University of Arizona, Tucson, Arizona 85721, USA; <sup>11</sup>Department of Energy Joint Genome Institute, Lawrence Berkeley National Laboratory, Berkeley, California 94720, USA; <sup>12</sup>HudsonAlpha Institute for Biotechnology, Huntsville, Alabama 35806, USA; <sup>13</sup>School of Plant Sciences, University of Arizona, Tucson, Arizona 85721, USA; <sup>14</sup>BIOS Institute, University of Arizona, Tucson, Arizona 85721, USA; <sup>15</sup>Informatics Institute, University of Missouri–Columbia, Columbia, Missouri 65211, USA; <sup>16</sup>Program in Genetics, North Carolina State University, Raleigh, North Carolina 27695, USA; <sup>17</sup>Department of Biological Sciences, North Carolina State University, Raleigh, North Carolina 27695, USA; <sup>18</sup>Division of Animal Sciences, University of Missouri–Columbia, Columbia, Missouri 65211, USA

The members of the tribe Brassiceae share a whole-genome triplication (WGT), and one proposed model for its formation is a two-step pair of hybridizations producing hexaploid descendants. However, evidence for this model is incomplete, and the evolutionary and functional constraints that drove evolution after the hexaploidy are even less understood. Here, we report a new genome sequence of *Crambe hispánica*, a species sister to most sequenced Brassiceae. Using this new genome and three others that share the hexaploidy, we traced the history of gene loss after the WGT using the Polyploidy Orthology Inference Tool (POInT). We confirm the two-step formation model and infer that there was a significant temporal gap between those two allopolyploidizations, with about a third of the gene losses from the first two subgenomes occurring before the arrival of the third. We also, for the 90,000 individual genes in our study, make parental subgenome assignments, inferring, with measured uncertainty, from which of the progenitor genomes of the allohexaploidy each gene derives. We further show that each subgenome has a statistically distinguishable rate of homoeolog losses. There is little indication of functional distinction between the three subgenomes: the individual subgenomes show no patterns of functional enrichment, no excess of shared protein–protein or metabolic interactions between their members, and no biases in their likelihood of having experienced a recent selective sweep. We propose a “mix and match” model of allopolyploidy, in which subgenome origin drives homoeolog loss propensities but where genes from different subgenomes function together without difficulty.

[Supplemental material is available for this article.]

Fifty years ago, Ohno (1970) published a forceful opus on the role of gene duplication, and in particular of genome duplication (i.e., polyploidy), in evolutionary innovation. Since then, evidence both of polyploidy’s ubiquity (Wolfe and Shields 1997; Van de Peer et al. 2009, 2017; Soltis and Soltis 2012) and of its role in evo-

lutionary innovations such as yeast aerobic glucose fermentation, the organization of the retinas of teleost fishes, and in plant defensive compounds, has continued to accumulate (Conant and Wolfe 2007; Merico et al. 2007; van Hoek and Hogeweg 2009; Edger et al. 2015; Sukeena et al. 2016). Preeminent among the polyploid lineages are the flowering plants, in which more than 180 ancient

**Corresponding author:** [gconant@ncsu.edu](mailto:gconant@ncsu.edu)

Article published online before print. Article, supplemental material, and publication date are at <https://www.genome.org/cgi/doi/10.1101/gr.270033.120>. Freely available online through the *Genome Research* Open Access option.

© 2021 Hao et al. This article, published in *Genome Research*, is available under a Creative Commons License (Attribution 4.0 International), as described at <http://creativecommons.org/licenses/by/4.0/>.

polyploidies are known (One Thousand Plant Transcriptomes Initiative 2019).

When a new polyploid genome is created by the merging of similar but not identical progenitor species, it is referred to as an allopolyploid. Among allopolyploidies, the preferential retention of gene copies (homoeologs) from one of the parental subgenomes, known as biased fractionation, has been observed in yeast, maize, cotton, monkeyflower, *Arabidopsis*, *Brassica*, and nematodes (Thomas et al. 2006; Conant and Wolfe 2008a; Cheng et al. 2012; Parkin et al. 2014; Renny-Byfield et al. 2015; Edger et al. 2017; Emery et al. 2018; Schoonmaker et al. 2020). Allopolyploids also show a tendency for genes from one of the subgenomes to be more highly expressed, and silencing or loss of genes from the remaining subgenomes is correspondingly more likely (Thomas et al. 2006; Schnable et al. 2011; Yoo et al. 2014). A number of sources of these biases have been proposed, from variations in transposon silencing (Freeling et al. 2012; Woodhouse et al. 2014; Zhao et al. 2017; Alger and Edger 2020), to the disruption of organelle-nucleus communication (Sharbrough et al. 2017; Costello et al. 2020) and epigenetic changes attributed to the genomic shock of polyploidy (McClintock 1984; Bird et al. 2018; Wendel et al. 2018). In this work, we sought to critically evaluate one such proposal: that allopolyploids might bring together co-evolved and conflicting copies of multiprotein complexes (Codoñer and Fares 2008; Gong et al. 2012; Scienski et al. 2015; Emery et al. 2018). In this framework, early random gene losses from one subgenome that partly resolved these conflicts might then set the polyploidy down a path favoring losses from that subgenome. A related proposal was made by Makino and McLysaght (2012), who argued that selection to maintain dosage balance among interacting genomic neighbors could produce local, and eventually global, biases in fractionation.

It is also notable that not all homoeologs are equally likely to revert to single copy after a polyploidy, regardless of the level of biased fractionation. Duplicated genes coding for transcription factors, ribosomal proteins, and kinases are over-retained after independent polyploidies in flowering plants, yeasts, ciliates, and vertebrates (Seoighe and Wolfe 1998; Blanc and Wolfe 2004; Maere et al. 2005; Aury et al. 2006; Makino and McLysaght 2010). These patterns are best explained by a need to maintain dosage balance among highly interacting genes (Birchler et al. 2005; Hakes et al. 2007; Birchler and Veitia 2012, 2014; Conant et al. 2014). There are also genes that prefer not to be duplicated: genes for DNA repair and those targeted to organelles have returned to single copy rapidly after genome duplication (De Smet et al. 2013; Conant 2014).

The Brassiceae are the most morphologically diverse tribe in the family Brassicaceae (Cheng et al. 2014) and contain important crops such as broccoli, cabbage, kale, mustard, and canola. This tribe experienced a hexaploidy (i.e., whole-genome triplication [WGT]) between 5 and 9 million years ago after its divergence from *Arabidopsis thaliana* (Wang et al. 2011). This Brassiceae WGT is a valuable system for studying all the aforementioned phenomena because the triplication allows us to explore each in unusual detail. This polyploidy was originally inferred with comparative linkage mapping (Lagercrantz 1998; Lukens et al. 2004; Parkin et al. 2005; Schranz et al. 2006) and confirmed by chromosome painting (Lysak et al. 2005; Lysak 2009). The patterns of biased fractionation observed in the genome of *Brassica rapa* suggested that the triplication “event” was actually two separate allopolyploid hybridizations involving three distinct diploid progenitor species, with the merger of the two currently highly

fractionated ancestral subgenomes occurring first, followed by the subsequent addition of a third subgenome, which currently possesses the most retained genes (Cheng et al. 2012; Tang et al. 2012). However, this proposal is worth revisiting as it rests on inferences from a single genome: a phylogenetically broader analysis of the genomes that descend from the hexaploidy would more firmly ground our descriptions of its early history. At the moment, we lack genomes from early diverging lineages with the hexaploidy, such as those in the genus *Crambe*, which is sister to the genus *Brassica* (Arias and Pires 2012). Biologically, *Crambe* species are not only important industrial oilseed sources because of their high erucic acid content (Lazzeri et al. 1997; Warwick and Gugel 2003; Carlsson et al. 2007) but also could serve as resources for *Brassica* crop development (Rudloff and Wang 2011).

Using a new genome sequence from *Crambe hispanica*, we analyzed the Brassiceae WGT with our tool for modeling post-polyploidy genome evolution: the Polyploidy Orthology Inference Tool (POInT) (Conant and Wolfe 2008a). We sought to first confirm the two-step hexaploidy model and its relationship to the observed three subgenomes in the extant genomes. POInT, which we recently extended to allow the analysis of WGTs (Schoonmaker et al. 2020), is ideally suited to this task because it can model homoeolog losses phylogenetically and test for biases in fractionation without ad hoc assumptions. We then tested the proposal that functional differences between the allopolyploid progenitors contributed to the biases in homoeolog losses using functional hierarchies, gene coexpression information, protein interaction catalogs, and metabolic network data.

## Results

### A well-assembled and annotated genome of *Crambe hispanica*

The genome of *Crambe hispanica* was assembled using Pacific Biosciences (PacBio) reads. This assembly had a contig N50 of 4.4 Mb across 1019 contigs with a total assembly length of 480 Mb. Eleven terminal telomeres were resolved by the Canu assembler (Koren et al. 2017). The assembly graph showed low heterozygosity and few assembly artifacts, with the exception of one megacuster consisting of a high copy number LTR across 500 contigs and spanning ~30 Mb. The draft assembly was then polished using Illumina paired-end data. We also used Hi-C proximity ligation sequencing data to scaffold the genome, which resulted in 18 scaffolds that include 99.5% of the original assembly with a scaffold N50 of 32.6 Mbp and scaffold N90 of 30.1 Mbp. The annotated genome is of high quality: we compared its gene set against the Benchmarking Universal Single-Copy Orthologs (BUSCO v.2) (Simão et al. 2015) plant data set (embryophyta\_odb9), finding that 95.8% of these expected genes were present in our annotation.

### Inferring blocks of triple-conserved synteny in four triplicated Brassiceae genomes and estimating an ancestral gene order

Based on their phylogenetic placement and assembly quality, we selected and retrieved from CoGe (Lyons and Freeling 2008; Lyons et al. 2008a) three additional mesohexaploid genomes for our analyses: those of *Brassica rapa* (version 1.5, CoGe id 24668) (Wang et al. 2011), *Brassica oleracea* (TO1000 version 2.1, CoGe id 26018) (Liu et al. 2014; Parkin et al. 2014), and *Sinapis alba* (version 1.1, CoGe id 33284). For each of these four genomes, we

inferred blocks of triple-conserved synteny (TCS), with the genome of *Arabidopsis thaliana* used as an unduplicated reference. We then merged these blocks across all of the four genomes: we refer to each such locus as a “pillar.” Each pillar consists of between one and three surviving genes in each of the four genomes. As described in Methods, we used both a set of TCS blocks inferred with POInT containing 14,050 pillars ( $P_{\text{pillars}}$ ) and a separate ancestral genome reconstruction that estimates the gene order that existed just before the WGT. The latter contains five reconstructed ancestral chromosomes involving 89 scaffolds with a total of 10,868 ancestral genes. When we match these genes to the TCS blocks computed with POInT, the result is 7993 ancestrally ordered pillars ( $A_{\text{pillars}}$ ).

### Inferring the evolutionary relationships of the four Brassicaceae genomes from gene loss patterns

We fit models of WGT evolution (see below) to several different orderings of the 14,050 pillars in the  $P_{\text{pillars}}$  set and to the  $A_{\text{pillars}}$  (Supplemental Table S1). These orderings of the  $P_{\text{pillars}}$  differed in their number of synteny breaks: we used the ordering with the highest likelihood under the WGT 3rate G1Dom model for our remaining analyses (see below). Similarly, we compared the fit of three possible phylogenetic topologies to the pillars under this model: the remainder of our analyses use the topology shown in Figure 1, which has the highest likelihood. We note that one of the other two topologies, although having a lower likelihood under POInT's models (Supplemental Fig. S1), is the phylogeny estimated using plastid genomes (Arias and Pires 2012). Because the  $A_{\text{pillars}}$  give similar parameter estimates but comprise a smaller data set, we will discuss our results in terms of the  $P_{\text{pillars}}$ .

### The three subgenomes differ in their propensity for homoeolog copy loss

POInT uses user-defined phylogenetic Markov models of gene loss after WGT. These models have seven states (Fig. 2): the triplicated state **T**, in which all three copies from the WGT are still present; the “duplicated” states **D<sub>1,2</sub>**, **D<sub>1,3</sub>**, **D<sub>2,3</sub>**, in which one out of the three gene copies has been lost, and three single-copy states, **S<sub>1</sub>**, **S<sub>2</sub>**, and **S<sub>3</sub>**. Previous work suggested that the three subgenomes that formed these hexaploids are distinct in their patterns of gene preservation (Cheng et al. 2012; Tang et al. 2012), consisting of a less fractionated (LF) genome, a subgenome with intermediate levels of gene loss (more fractionated 1 or MF1), and an even more fractionated subgenome (MF2). We hence defined state **S<sub>1</sub>** to correspond to LF and **S<sub>2</sub>** and **S<sub>3</sub>** to MF1 and MF2, respectively.

POInT statistically assigned genes from each of the four mesopolyploid genomes to the LF, MF1, and MF2 subgenomes with high confidence: 75% of the pillars have subgenome assignments with posterior probabilities >0.84 (Supplemental Fig. S3). We observe clear signals of biased fractionation: although we estimate that 2864 genes were lost from the LF subgenome along the shared root branch (e.g., before the split of *S. alba* from the other three species), the corresponding figures for MF1 and MF2 are 5373 and 6347, respectively (Fig. 1). These values are in qualitative agreement with previous findings (Cheng et al. 2012, 2014; Liu et al. 2014; Xie et al. 2019).

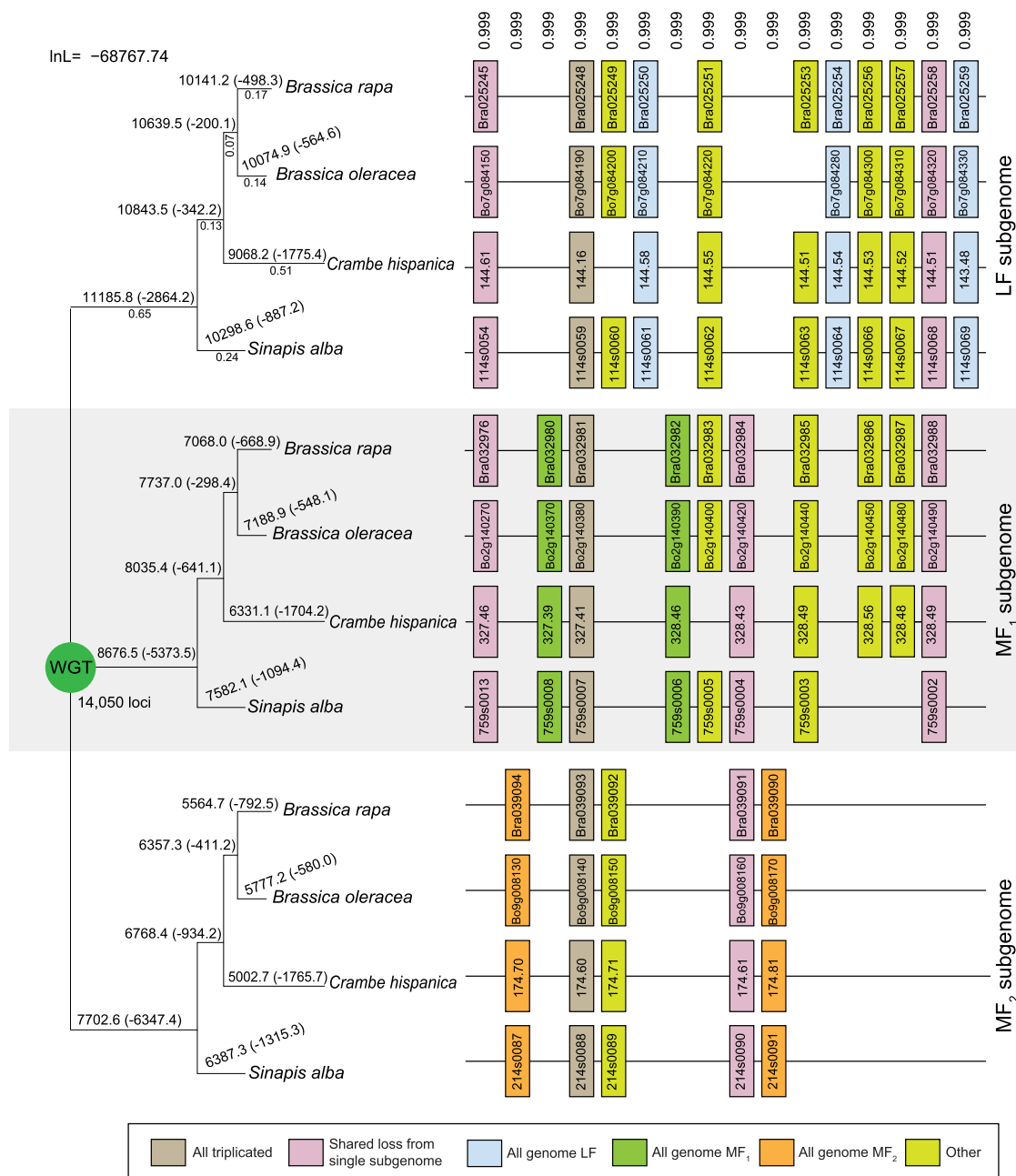
We assessed the statistical support for these estimated differences in the subgenomes' rates of homoeolog loss using a set of nested models of post-WGT gene loss. We started with a model (WGT Null) that did not differentiate between the subgenomes, meaning that the shared base transition rate from **T** to **D<sub>1,2</sub>**,

**D<sub>1,3</sub>**, or **D<sub>2,3</sub>** is defined to be  $\alpha$  ( $0 \leq \alpha < \infty$ ) (Fig. 2). The transition rate from **D<sub>1,2</sub>**, **D<sub>1,3</sub>**, or **D<sub>2,3</sub>** to **S<sub>1</sub>**, **S<sub>2</sub>**, or **S<sub>3</sub>** is scaled by  $\sigma$ ; that is, it occurs at rate  $\alpha \times \sigma$ . We compared this model to a more complex one that allowed losses of both triplicated and duplicated genes to be less frequent from a posited LF subgenome (WGT 1Dom) (Fig. 2). This model introduces a fractionation parameter  $f_1$  ( $0 \leq f_1 \leq 1$ ), which potentially makes the transitions between **T** and **D<sub>2,3</sub>** rarer than the other T-to-D rates ( $\alpha \times f_1$ ) (Fig. 2). The WGT 1Dom model fits the pillar data significantly better than does WGT Null (Fig. 2) ( $P < 10^{-10}$ , likelihood ratio test with two degrees of freedom). We next compared the WGT 1Dom model to a WGT 1Dom<sub>G3</sub> model that gives MF1 and MF2 separate loss rates. Again, this model gives a better fit to the pillar data than did WGT 1Dom ( $P < 10^{-10}$ , likelihood ratio test with two degrees of freedom) (Fig. 2). We hence confirm the presence of three subgenomes, distinguishable by their patterns of homoeolog loss. Our approach does not require the identification of these three subgenomes a priori: the probabilistic assignment of genes to subgenomes is an integral part of the POInT orthology computation. As a result, the inherent uncertainty in these assignments is accounted for in estimating the various biased fractionation parameters. Our orthology inferences can be explored visually with POInT<sub>browse</sub> (<http://wgd.statgen.ncsu.edu/>).

### Patterns of post-WGT gene loss support the two-step model of hexaploidy

To test the hypothesis that the WGT proceeded in two steps (Cheng et al. 2012; Tang et al. 2012), we used two approaches. First, we applied an extended version of the WGT 1Dom<sub>G3</sub> model in which each model parameter was allowed to take on distinct values on the root branch and on the remaining branches (Root-spec. WGT 1Dom<sub>G3</sub>) (Fig. 2). This extended model fits the pillar data significantly better than does the original WGT 1Dom<sub>G3</sub> model ( $P < 10^{-10}$ , likelihood ratio test with five degrees of freedom) (Fig. 2). The biased fractionation parameters for the root branch differ from those of the remaining branches: the value of  $f_{1,3}$  on the root is smaller than on later branches (0.6445 vs. 0.7368), whereas  $f_{2,3}$  is larger (0.6766 vs. 0.4078). These values are consistent with a two-step hypothesis: before the arrival of LF, there would have been a number of losses from MF1 and MF2, meaning that the relative preference for LF would be higher (smaller  $f_{1,3}$ ).

In our second approach, we developed a specific model of the two-step hexaploidy (WGT 1Dom<sub>G3</sub>+Root<sub>LF</sub>) (Fig. 2). This model describes the transition from a genome duplication to a triplication. All pillars start in state **D<sub>2,3</sub>**: that is, the first allopolyploidy has just occurred and the MF1 and MF2 genes are present but not the LF ones. We then model the addition of LF as transitions to either the **T**, **D<sub>1,2</sub>**, or the **D<sub>1,3</sub>** states (with rates  $\tau$ ,  $\beta_{1,2}$ , or  $\beta_{1,3}$ , respectively). State **T** is seen when no losses occurred before the arrival of LF, the other states occur when either MF1 or MF2 experienced a loss before the arrival of LF. Any pillars that remain in **D<sub>2,3</sub>** had no corresponding gene arrive from LF. Of course, at the level of the individual pillar, we have insufficient data to make such inferences; the utility of this model is to give global estimates of the degree of fractionation seen in MF1 and MF2 before the arrival of LF. This model offers a significantly improved fit over WGT 1Dom<sub>G3</sub> ( $P < 10^{-10}$ , likelihood ratio test with three degrees of freedom) (Fig. 2). More important, we can propose other versions of this model in which either MF1 or MF2 is the last arriving subgenome; when we do so, the model fit is much worse than seen with WGT 1Dom<sub>G3</sub>+Root<sub>LF</sub> model (Supplemental Table S1).



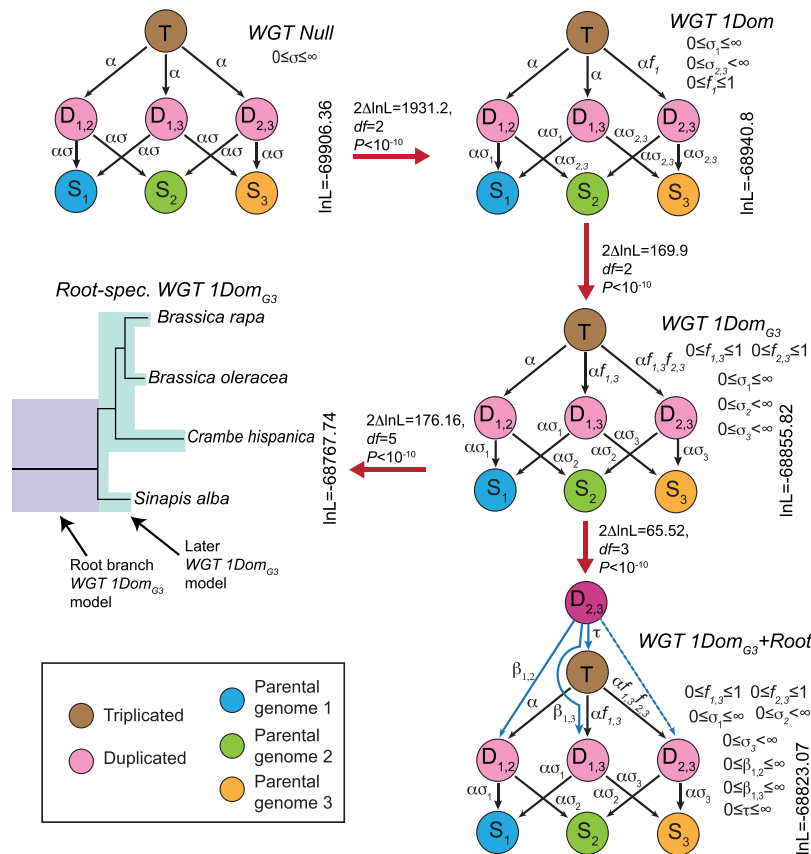
**Figure 1.** Subgenome assignment and inference of gene loss after the shared WGT in four species. After the WGT, each ancestral locus could potentially expand to three gene copies, but owing to biases in the loss events, the number of surviving genes from the subgenomes are unequal. Our analyses (Results) indicate the presence of a less fractionated (LF) subgenome and two more fractionated ones (MF<sub>1</sub> and MF<sub>2</sub>). These inferences are based on the gene losses observed across four genomes and along the phylogeny depicted. Shown here is a window of 16 post-WGT loci (of the total 14,050 such loci) in four species that share the WGT: *Brassica rapa*, *Brassica oleracea*, *Crambe hispanica*, and *Sinapis alba*. Each pillar corresponds to an ancestral locus, and the boxes represent extant genes. Pairs of genes are connected by lines if they are genomic neighbors (e.g., in synteny). The numbers above each pillar are the posterior probabilities assigned to this combination of orthology relationships relative to the other (3)<sup>1</sup>-1 = 1295 possible orthology states. The numbers above each branch of the tree give the number of genes in each subgenome surviving to that point, with the number of gene losses in parentheses. The gene loss inferences made by POInT are probabilistic: because some gene losses cannot be definitively assigned to a single branch, the resulting loss estimates are not integers. The numbers below the branches in the first subtree are POInT's branch length estimates ( $\alpha t$ ).

Hence, we can conclude that subgenomes MF<sub>1</sub> and MF<sub>2</sub> had already begun a process of (biased) fractionation before the addition of the LF subgenome. These conclusions derive only from genes that were inferred to be present in all three parental subgenomes, a requirement of the POInT models.

### A gap between the two allopolyploidies

This root-specific model also allows us to estimate the state of MF<sub>1</sub> and MF<sub>2</sub> immediately before the arrival of LF. In particular, we can estimate the percentage of pillars that had already experienced





**Figure 2.** POInT's models for inferring WGT. Five different models of post-WGT evolution and their In-likelihoods are shown. In each model, the colored circles represent different states. The brown circle represents the triplicated state (**T**); the pink circles are duplicated states (**D<sub>1,2</sub>**, **D<sub>1,3</sub>**, and **D<sub>2,3</sub>**); the blue, green, and yellow circles are three single-copy states (**S<sub>1</sub>** for the LF subgenome, **S<sub>2</sub>** for the MF1 subgenome, and **S<sub>3</sub>** for the MF2 subgenome). The transition rates between states are shown above the arrows: ( $\alpha$ ) transition rate from triplicated state to duplicated states; ( $\alpha\sigma$ ) transition rates from duplicated states to single-copy states; ( $f$ ) fractionation parameters; ( $\beta$  and  $\tau$ ) root model parameters. Red arrows connect pairs of models compared using likelihood ratio tests (Methods). In the WGT Null model, transition rates are the same across three subgenomes, modeling the scenario of no biased fractionation. In the WGT 1Dom model with the biased fractionation parameter  $f_1$  ( $0 \leq f_1 \leq 1$ ), the MF1 and MF2 subgenomes are more fractionated than LF subgenome. In the WGT 1Dom<sub>G3</sub> model, two fractionation parameters  $f_{1,3}$  and  $f_{2,3}$  were introduced, distinguishing the three subgenomes: MF2 is more fractionated than MF1, and MF1 is more fractionated than LF. The Root-spec. WGT 1Dom<sub>G3</sub> model is similar to the previous model, but with two sets of parameters, one set for the root branch and the other for the remainder of the branches. The WGT 1Dom<sub>G3</sub> + Root model is a two-step hexaploidy model created by starting each pillar in an intermediate state **D<sub>2,3</sub>**. This state represents the merging of the MF1 and MF2 subgenomes as the first step of the hexaploid formation. The **T**, **D<sub>1,2</sub>**, and **D<sub>1,3</sub>** states represent the second allopolyploidy, with either no prior homoeolog losses (**T**) or a loss from one of the two MF subgenomes before that event (**D<sub>1,2</sub>** or **D<sub>1,3</sub>**).

losses before LF's arrival. About 28% of all the MF1 homoeologs inferred to have been lost on the root branch were lost before the arrival of LF, with the equivalent number of MF2 losses being 38%. A negligible 0.3% of pillars do not appear to have received a copy of the LF homoeolog.

### Mixed evidence for differences in selective constraint between subgenomes

In our data set there are 218 loci that have retained triplicates in all four genomes and have subgenome assignment confidence  $\geq 95\%$ . For each locus we calculated the selective constraints acting on the group of 12 genes using codeml (Yang 2007), allowing the genes

from each subgenome to have a different  $d_N/d_S$  value. On average, among these retained triplets, genes from the LF subgenome show slightly smaller  $d_N/d_S$  values than do those from MF1 and MF2, but these differences are not statistically significant (Wilcoxon rank-sum tests LF to MF1:  $P = 0.300$ , LF to MF2:  $P = 0.079$ ) (Supplemental Fig. S4).

### Single-copy genes from multiple subgenomes are enriched in genes functioning in DNA repair

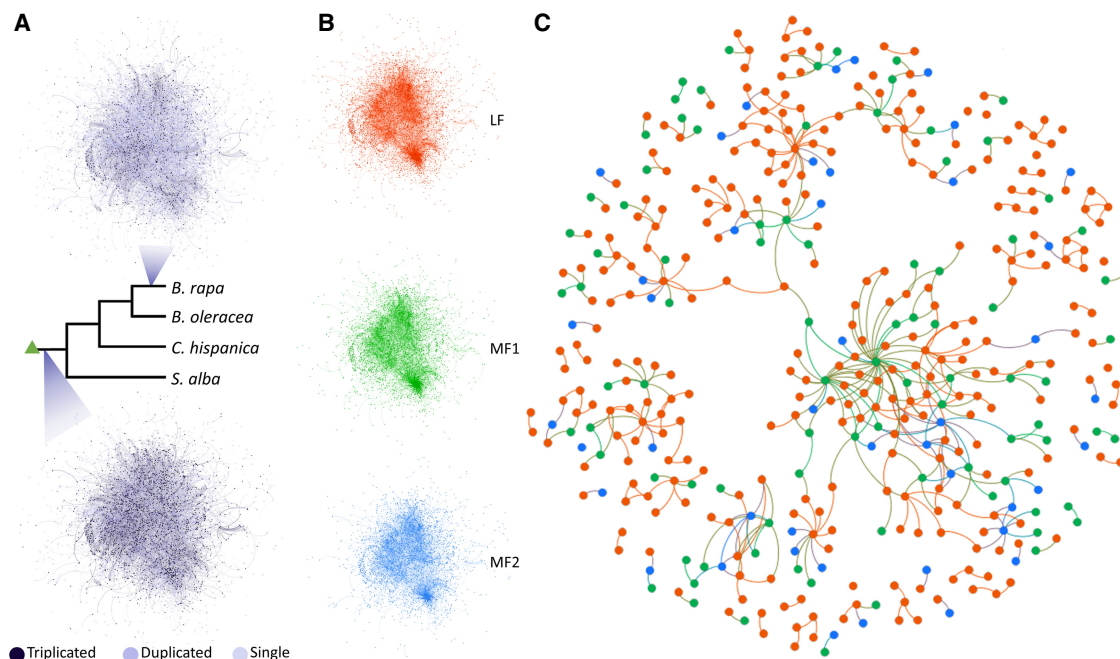
GO overrepresentation tests were performed with the *Arabidopsis* orthologs of genes returned to single copy by the end of the root branch from each subgenome. Similar to previous findings (De Smet et al. 2013), we found that single-copy genes are enriched in biological processes such as DNA repair and DNA metabolism (Supplemental Fig. S5). More specifically, single-copy genes from the LF subgenome are enriched in base-excision repair, whereas MF1 single-copy genes are enriched in nucleotide-excision repair, non-recombinational repair, and double-strand break repair (Supplemental Fig. S5A). Single-copy genes from both LF and MF1 show overrepresented molecular functions in endo- and exodeoxyribonuclease activities (Supplemental Fig. S5B). LF single-copy genes are also enriched in RNA interference processes, suggesting that such interference, targeted to the MF1 and MF2 subgenomes, could be one mechanism by which biased fractionation was driven.

### Genes from the same subgenome are not overly likely to physically or metabolically interact

For genes with high subgenome assignment confidence ( $\geq 95\%$ ), we mapped those assignments (LF, MF1, or MF2) and the duplication status at the end of the root branch onto the nodes (gene products) of the *A. thaliana* protein-protein interaction (PPI) network (Methods). For comparative purposes, we also produced a mapping of an extant network, based on the gene presence/absence data and subgenome assignments in *B. rapa*.

In the "ancient" network inferred at the end of the common root branch, there are a relatively large number of nodes (1952) associated with surviving triplicated loci; these nodes were connected by a total of 2384 triplet-to-triplet edges. The *B. rapa*-specific network contains fewer nodes with retained triplets (662), and there were 263 edges connecting these nodes (Fig. 3A).

The dosage constraints that affect surviving gene copies post-polyploidy will tend to result in the retention of genes involved in multiunit complexes or in the same signaling pathways (Birchler and Veitia 2007, 2012; Conant et al. 2014). Thus, we expected to



**Figure 3.** Protein–protein interaction networks after the WGT. (A) The *Arabidopsis* PPI network at the root branch (bottom), and the same PPI network colored by the *Brassica rapa* gene retention status (top). The dark purple nodes represent retained triplets (Supplemental Code). (B) The PPI network partitioned by subgenome assignment at the root branch: (LF) red, 4249 nodes and 8454 edges; (MF1) green, 3379 nodes and 6442 edges; (MF2) blue, 3073 nodes and 4961 edges. (C) A subset of the PPI network where only nodes encoded by single-copy genes and connected to other single-copy nodes are shown. Red nodes are from the LF subgenome, green nodes are from the MF1 subgenome, and blue nodes are from the MF2 subgenome.

see that the retained triplets showed higher network connectivity. And indeed, our permutation tests reveal that the retained triplets on the root branch are significantly overconnected to each other in the PPI network ( $P=0.018$ ) (Supplemental Fig. S6). We also hypothesized that proteins coded for from the same subgenome would be more likely to be connected because of preferential retention of genes from a single complex from the same subgenome. To test this idea, we partitioned the gene products based on their subgenome of origin. The LF subgenome contains more genes and thus more exclusive connections (Fig. 3B). When considering only genes that had returned to single copy by the end of the root (Fig. 3C), we identified 188 LF-LF edges among 886 single-copy LF genes, with fewer edges exclusive to MF1 and MF2 genes (30 and 3, respectively). We used randomization (Methods) to test whether the numbers of such subgenome-specific edges differed from what would be expected by chance. When considering the network as a whole, we found that there were significantly fewer LF-LF edges than expected ( $P=0.022$ ) (Supplemental Fig. S6). However, when we considered only the single-copy genes in the network, the number of subgenome-specific edges did not differ from that seen in random networks for any of the three subgenomes ( $P=0.286$  for LF-LF edges) (Supplemental Fig. S6), suggesting that the original dearth of such edges was a statistical artifact resulting from the excess of triplet-to-triplet edges.

We also explored the association of between genes' role in metabolism and their pattern of post-hexaploidy evolution using the *A. thaliana* metabolic network (Methods). However, again considering the state of each pillar at the end of the root branch, we did not find an excess of shared metabolic interactions between triplicated or single-copy genes in this network (Supplemental Fig. S6).

Finally, we asked whether genes from the same subgenome are more likely to be coexpressed. We constructed a *B. rapa* coexpress-

sion network from the RNA-seq data described in Methods. In this network, edges connect pairs of genes that are highly correlated in their expression (Methods). The inferred coexpression network contains 3933 nodes (e.g., genes) from the LF subgenome, 2310 nodes from MF1, and 1982 from MF2. We then counted the number of edges connecting pairs of nodes from the same subgenome. To assess whether there was an excess of such shared subgenome coexpression relationships, we randomly rewired the network 100 times and compared the edge count distributions from these randomized networks to those of the real network (Pérez-Bercoff et al. 2011). We found that the real network did not show a significant excess of shared edges between genes from the same subgenome when compared to the randomized networks (LF-LF,  $P=0.36$ ; MF1-MF1,  $P=0.82$ ; MF2-MF2  $P=0.08$ ) (Fig. 4A–F).

### Subgenome of origin does not affect the propensity to have experienced a selective sweep

We tested for associations between genes' subgenome of origin and their propensity to experience recent selective sweeps. Data on these sweeps was taken from a recent scan in *B. rapa* by Qi et al. (2021). No subgenome had either an excess or a deficit of observed sweeps relative to the other two (Supplemental Fig. S7). Genes from the MF1 subgenome showed slightly negative association with selective sweeps ( $P=0.0089$ ,  $\chi^2$  test).

## Discussion

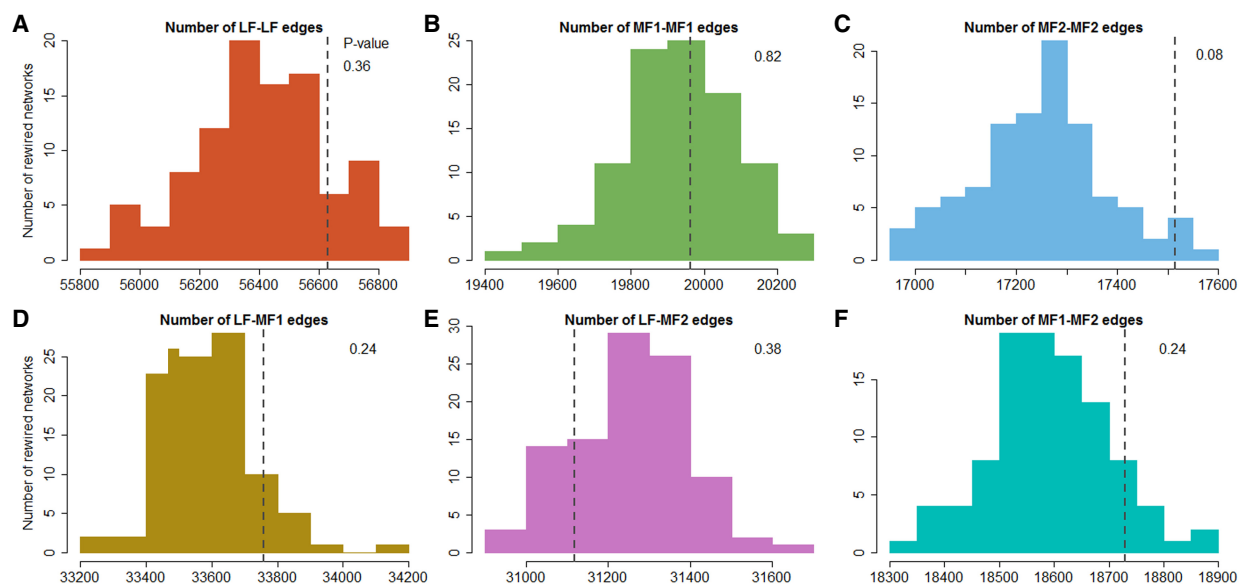
The combination of the new genome sequence of *Crambe hispanica* and our modeling of the post-WGT evolution of the four Brassiceae genomes using POInT allowed us to draw a number of conclusions regarding the Brassiceae WGT. We confirmed

previous work (Cheng et al. 2012; Tang et al. 2012) arguing that these genomes derive from a pair of ancient allopolyploidies: more subtly, we also show that, as had been proposed, the least fractionated subgenome (e.g., the one with the most retained genes) is very likely the genome that was added last. To these proposals, we add the new observation that these hybridization events were likely not particularly closely spaced in time: our model predicts that on the order of one-third of the gene losses from subgenomes MF1 and MF2 that occurred on the root branch occurred before the arrival of the LF subgenome. Of course, one should not take this result to necessarily imply a very large number of calendar years between the events; gene loss immediately after polyploidy can be quite rapid (Scannell et al. 2007; De Smet et al. 2013). In the future, it will be interesting to further refine the timing of these events; the problem, however, is a challenging one because the allopolyploid nature of the events means that molecular clock approaches will tend to estimate speciation times for the allopolyploid ancestors rather than hybridization times.

Many forces shape genome evolution after polyploidy. A tendency for genes that operate in multiunit complexes or that are involved in signaling cascades to remain duplicated post-polyploidy is best explained by the presence of dosage constraints driven by a need to maintain the stoichiometry and kinetics of assembly for such functional units (Birchler et al. 2005, 2016; Birchler and Veitia 2007, 2012; Conant et al. 2014). On the other hand, genes involved in functions such as DNA repair very often return rapidly to singleton status after duplication (Freeling 2009; De Smet et al. 2013). Our results illustrate the importance of these dosage effects, with genes whose products interact with many other gene products in *A. thaliana* being overly likely to be retained in triplicate in these Brassicace genomes. This pattern is not observed for metabolic genes, a result we interpret as illustrating metabolism's dynamic robustness to gene dosage changes (Kacser and Burns 1981).

We had previously argued that one force driving the biased fractionation that distinguishes the LF, MF1, and MF2 subgenomes might be selection to maintain coadapted complexes from a single parental subgenome (Emery et al. 2018). That such coadapted complexes exist and respond to polyploidy is suggested by the gene conversions seen after the yeast polyploidy among the duplicated ribosomal and histone proteins (Evangelisti and Conant 2010; Scienski et al. 2015). However, these examples may be exceptions rather than the rule, meaning that pressure to maintain coadapted complexes is not a significant driver of biases in fractionation. We found that although there was some degree of functional distinction for single-copy genes from the LF subgenome (e.g., enrichment in biological processes such as DNA repair and RNA interference), more generally speaking, there was no significant evidence of functional incompatibilities between single-copy genes from different subgenomes. Thus, genes from the same subgenome were not more likely to interact with each other physically, nor were the genes returned to single copy on the common root branch functionally subdivided among the subgenomes. Even the DNA repair enzyme genes that rapidly returned to single copy appear to derive from at least two of the three subgenomes. It hence appears that the original hypothesis of De Smet et al. (2013) that these genes may be prone to dominant negative interactions may best explain their preference for a single-copy state.

It remains to be seen if the “mix and match” pattern of subgenome retention observed here represents the dominant mode of evolution for allopolyploidies. Of course, whether or not subgenome conflicts exist may be partly a question of the preexisting differences between the progenitor species, and a more general survey of allopolyploidies that includes estimates of the progenitor genomes' divergence before the polyploidy events would be most enlightening. If the pattern holds, however, the implications would be significant, because hybridization represents an important means of adaption (Paterson 2005; Hollister 2015; Alix et al.



**Figure 4.** Subgenome-specific edge counts for 100 rewired *Brassica rapa* coexpression networks compared to those from the actual network. (A) Distribution of the number of edges connecting pairs of *B. rapa* genes from the LF subgenome in 100 rewired networks. (B) Distribution of the number of edges connecting pairs of genes from the MF1 subgenome. (C) Distribution of the number of edges connecting pairs of genes from the MF2 subgenome. (D) Distribution of the number of edges connecting LF genes to MF1 genes. (E) Distribution of the number of edges connecting LF genes to MF2 genes. (F) Distribution of the number of edges connecting MF1 and MF2 genes. In each panel, the dark gray dashed line shows the number of edges with that set of subgenome assignments for the true network. See Supplemental Code.

2017; Blanc-Mathieu et al. 2017; Smukowski Heil et al. 2017). Adding the effects of hybridization to polyploidy's known association with innovation (Edger et al. 2015) and to the tendency of dosage sensitive genes to remain duplicated for the longer periods needed for such innovations (Blanc and Wolfe 2004; Conant and Wolfe 2008b; Conant et al. 2014; Zhao et al. 2017; Liang and Schnable 2018; Qiu et al. 2020) makes a strong case for considering polyploidy a critical source of material for innovation at the genomic level.

## Methods

### *Crambe hispanica* (PI 388853) sample preparation and genome sequencing

Leaf tissue was harvested from 36 dark treated inbred plants (selfed for nine generations; PI 388853). Dark treatment was performed to reduce chloroplast abundance and involved leaving the plants in a dark room for 3–4 d. After treatment, 5 g of tissue was collected across 36 plants. This process was repeated three times, allowing us to obtain a total of 15 g of tissue. This tissue was then sent to the University of Delaware Sequencing and Genotyping Center at the Delaware Biotechnology Institute for high molecular weight DNA isolation and library preparation before PacBio and Illumina sequencing. Libraries were prepared using standard SMRTbell procedures, followed by sequencing of 11 PacBio SMRT cells on a PacBio sequel and one PacBio SMRT cell of RSII sequencing. Paired-end 150-bp reads were generated on an Illumina HiSeq 2500 system. For Hi-C scaffolding, 0.5 g tissue sample was sent to Phase Genomics.

### *Crambe hispanica* v1.1 genome assembly and annotation

The assembly of the *Crambe hispanica* v1.1 genome was performed using Canu v1.6 (Koren et al. 2017). In total, 3.9 million raw PacBio reads spanning 48 Gb were used as input for Canu. The following parameters were modified for assembly: minReadLength = 1000, GenomeSize = 500 Mb, corOutCoverage = 200 “batOptions=–dg 3 –db 3 –dr 1 –ca 500 –cp 50”. All other parameters were left as default. The assembly graph was visualized using Bandage (Wicket et al. 2015) to assess ambiguities in the graph related to repetitive elements and heterozygosity. The draft Canu assembly was polished reiteratively using high-coverage Illumina paired-end data (82 million reads) with Pilon v1.22 (Walker et al. 2014). Quality filtered Illumina reads were aligned to the genome using Bowtie 2 (v2.3.0) (Langmead and Salzberg 2012) under default parameters, and the resulting BAM file was used as input for Pilon with the following parameters: –flank 7, –K 49, and –mindepth 8. Pilon was run recursively three times using the updated reference each time to correct the maximum number of residual errors.

A Proximo Hi-C library was prepared as described (Phase Genomics) and sequenced on an Illumina HiSeq 2500 system with paired-end 150 bp reads. The de novo genome assembly of Hi-C library reads were used as input data for the Phase Genomics Proximo Hi-C genome scaffolding platform.

The genome was annotated using MAKER (Campbell et al. 2014), using evidence of protein sequences downloaded from the Araport 11 and Phytozome 12 plant databases (Goodstein et al. 2012; Cheng et al. 2017) and *C. hispanica* transcriptome data. The transcriptome data for genome annotation was extracted from bud, root, and leaf tissues under standard daylight conditions using the Thermo Fisher Scientific PureLink RNA Mini Kit. Library prep was done using Illumina TruSeq DNA PCR-free and sequenced for nonstranded mRNA-Seq 2 × 250 on Illumina HiSeq. *C. hispanica* transcriptomic data were assembled with StringTie

(Pertea et al. 2015). Repetitive regions in the genome were masked using a custom repeat library and RepeatMasker (Bao et al. 2015) through RepeatMasker Open-4.0 (Smit et al. 2015). Ab initio gene prediction was performed using SNAP (Korf 2004) and AUGUSTUS (Stanke and Waack 2003). The resulting MAKER gene set was filtered to select gene models with Pfam domain and annotation edit distance (AED) <1.0. Then, the amino acid sequences of predicted genes were searched against a transposase database using BLASTP and an *E*-value cutoff of  $10^{-10}$  (Campbell et al. 2014). If >30% of a given gene aligned to transposases after the removal of low complexity regions, that gene was removed from the gene set.

### Triple-conserved synteny reconstruction

We developed a three-step pipeline for inferring the conserved synteny blocks created by polyploidy (Emery et al. 2018). For the first step of this pipeline, we used *Arabidopsis thaliana* Col-0 version 10.29 (CoGe genome id 20342) as a nonhexaploid outgroup and identified homologous genes between it and each of the four hexaploid genomes using GenomeHistory (Conant and Wagner 2002). Genes were defined as homologous if their translated products shared 70% amino acid sequence identity and the shorter sequence was at least 80% of the length of the longer. In the second step, we sought to place genes from each of the hexaploid genomes into blocks of triple-conserved synteny (TCS) relative to their *A. thaliana* homologs. To do so, we inferred a set of “pillars,” each of which contains a single gene (or group of tandem duplicates) from *A. thaliana* and between one and three genes from the hexaploidy genome. Using simulated annealing (Kirkpatrick et al. 1983; Conant and Wolfe 2006), we sought a combination of pillar gene assignments and relative pillar order that maximized the TCS. In the third and final step, we merged the pillars across the four hexaploid genomes, using their *A. thaliana* homologs as indices. We then sought a global pillar order that minimized the number of synteny breaks across all of the hexaploid genomes (Supplemental Fig. S2). These three steps resulted in a set of 14,050 ordered pillars, each with at least one surviving gene from each of the four genomes (Fig. 1) and a corresponding “ancestral” gene from *A. thaliana*. Supplemental Table S1 shows that POInT's model inferences are consistent across a number of such estimated ancestral orders.

### An ancestral genome order reconstruction

As a verification of our POInT pipeline, we also sought an independent inference of the order of the genes in the parental subgenomes just before the first step of the *Brassica* triplication. First, we used CoGe's SynMap (Lyons et al. 2008b) to identify homologs between the *A. thaliana* and *Arabidopsis lyrata* genomes and those between *B. rapa* and *B. oleracea*. The SynMap algorithm was applied with a chaining distance of 50 genes and a minimum of five aligned gene pairs to identify likely orthologous genes in all pairwise comparisons of the four genomes. Paralogs were identified by self-comparisons of each of the two *Brassica* genomes with SynMap. Then these orthologs and paralogs were grouped into 24,011 homology sets with the OMG! program (Zheng et al. 2011). Every homology set consists of one to three *Brassica* paralogs from each of the three *Brassica* genomes and a single *Arabidopsis* gene from each of the two *Arabidopsis* genomes, representing one “candidate gene” in the reconstructed ancestral genome. Among these, 2178 homology sets contained the maximum of eight genes (one each from the two *Arabidopsis* genomes and three each from the two *Brassica* genomes).



The homology sets were used to retrieve the ancestral gene order from an adjacency graph using an efficient algorithm called Maximum Weight Matching (MWM) (Zheng et al. 2013). We identified all the gene adjacencies in the four genomes, considering only the genes in the homology sets. Each adjacency was then weighted according to how many of the eight possible adjacencies were actually observed. The MWM produced an optimal set of 10,944 linear contigs containing all 24,001 putative ancestral genes from the homology sets that included 13,057 of 45,982 total adjacencies in the data set, with the remaining adjacencies being inconsistent with this optimal set. We used the contigs in the output of the MWM to reconstruct each of the five ancestral chromosomes. There were 34 contigs containing large proportions of genes originating in two or more of the ancient chromosomes that were discarded, as were any contigs containing four or fewer genes from a *Brassica* genome. Although the 9712 contigs so omitted represent 89% of all contigs, they represent only 55% of the genes, leaving a small group of large contigs with strong synteny relations in our ancestral reconstruction. We next identified adjacencies among the contigs themselves and applied a second iteration of MWM on them, giving the optimal ordering of those contigs. Combining these orders with the existing gene order information within each contig yields the position of all the genes on each ancestral chromosome. This order was mapped to our set of pillars of TCS, giving a subset of those pillars ordered by this ancestral order estimate.

### The phylogenetic relationships of the triplicated members of the Brassicaceae

POInT fits the models shown in Figure 2 to the pillar data under an assumed phylogenetic topology using maximum likelihood, allowing us to use that likelihood statistic to compare different phylogenetic relationships among these four hexaploid taxa. POInT's computational demands were too great to allow testing all 15 rooted topologies of four species (POInT's models are not time reversible). However, by making the reasonable assumption that *B. rapa* and *B. oleracea* are sister to each other, we were able to test the three potential relationships of *C. hispanica* and *S. alba* to the two *Brassicaceae*. Figure 1 gives the maximum likelihood topology: the two alternative topologies and their likelihoods are given in Supplemental Figure S1.

### Selective constraints of the retained triplets

We identified 218 pillars that retained triplicated genes across all four genomes and for which the confidence in their subgenome assignments was  $\geq 95\%$ . For each such pillar, the 12 sequences were aligned using T-coffee (Notredame et al. 2000). The cladogram for each such set of 12 genes consists of three subtrees grouping four sequences that belong to the same subgenome in the same sister group (Supplemental Fig. S4). Using codeml in PAML (Yang 2007) with CodonFreq set to F3  $\times$  4, we inferred three distinct  $d_N/d_S$  ratios, one for each of the three subtrees deriving from the three parental subgenomes.

### Functional analysis of single-copy genes from different subgenomes

We performed functional analysis for genes where we have high ( $\geq 95\%$ ) confidence that they returned to single copy along the common root branch. Using the corresponding "ancestral" locus from *A. thaliana*, we performed individual Gene Ontology analyses with PANTHER (Mi et al. 2019) overrepresentation tests (release date 20190711) for genes from each subgenome. The background

list used in all cases was the loci that remained duplicated or triplicated at the end of the root branch.

### Protein–protein interaction and metabolic network analysis

The *A. thaliana* protein–protein interaction (PPI) network was downloaded from BioGRID (Arabidopsis Interactome Mapping Consortium 2011; Stark et al. 2011). The root branch post-WGT subgenome assignments for each "ancestral" locus represented by an *Arabidopsis* gene were mapped onto the nodes (gene products) of the PPI network, so long as our confidence in those subgenome assignments was  $\geq 95\%$ . Similarly, for the extant *B. rapa*, we took loci with high subgenome assignment confidence  $\geq 95\%$  and mapped their *A. thaliana* orthologs onto network nodes. The resulting PPI network (Fig. 3) was visualized using Gephi 0.9.2 (Bastian et al. 2009) with the Fruchterman Reingold and Yifan Hu layout algorithms (Fruchterman and Reingold 1991; Hu 2006). To test whether gene products from the same subgenome are overconnected in this network, we permuted the subgenome assignments 1000 times, holding the network topology unchanged. We then compared the actual number of edges connecting single-copy genes from the same subgenome with the distribution of this value seen in the randomized networks (Supplemental Fig. S6). We also asked whether the ancestral genes corresponding to retained triplets showed an excess of connections among themselves. Because the number of edges between retained triplets and between single-copy genes are not independent, we performed an additional set of permutations, in which we held all the triplet rows constant and only shuffled the subgenome assignments of the remaining nodes.

We performed similar analyses using the AraGEM v1.2 metabolic network from *A. thaliana* (de Oliveira Dal'Molin et al. 2010; Bekaert et al. 2012). In this network, each node represents a biochemical reaction, and pairs of nodes are connected by edges if their respective reactions share a metabolite. For each *A. thaliana* gene encoding an enzyme catalyzing one such reaction, we mapped the root branch subgenome assignments (again requiring  $\geq 95\%$  confidence), assigning to that gene three presence/absence variables (one per subgenome). Then, for each subgenome, we counted the number of edges between pairs of nodes with at least one pair of single-copy genes from a common subgenome. We assessed significance by holding the network topology and *Arabidopsis* gene assignments constant and randomizing the subgenome assignments 1000 times. We then compared the distributions of the single-subgenome edge counts from the simulations with the actual values (Supplemental Fig. S6).

### *Brassica rapa* coexpression network analysis

We generated a gene expression data set for *Brassica rapa* spanning diverse experimental conditions, including the following: a cold treatment in leaves (4 h and 28 h post), methyl jasmonate treatment in leaves (4 h and 28 h post), anaerobic treatment in leaves (4 and 8 h post), salt treatment in roots (4 h and 28 h post), and a diurnal time course in leaves (every 4 h, six time points) in standard light-dark conditions but also in complete dark and complete light conditions. Total RNA was extracted from above organs using the Invitrogen Purelink RNA Mini Kit (Thermo Fisher Scientific), converted into a library using the Illumina TruSeq RNA kit, and paired-end 100-bp reads were sequenced on the HiSeq 2000 instrument at the VJC Genomics Sequencing Laboratory at the University of California, Berkeley. The NextGENe V2.17 (SoftGenetics) software package was used to remove low-quality Illumina data, map reads to the *B. rapa* FPsc (v1.0, CoGe id

20101) reference genome, and calculate normalized reads per kilobase of transcript per million (RPKM) values for all genes.

We filtered the data set to only include genes that were missing a measured expression value for at most one of the 32 RNA-seq libraries, leaving 24,907 *B. rapa* genes in it. The gene identifiers used for the expression data set were from the *B. rapa* FPsc (v1.0, CoGe id 20101) reference genome, so we translated these identifiers to those from *B. rapa* Chiifu (v1.5, id 24668) using CoGe SynMap (Lyons et al. 2008b). In so doing, we only used *B. rapa* genes with one-to-one matches between the two references. For any pair of genes in the expression data set, we calculated the Spearman's correlation coefficient of their RPKM values. A coexpression network was then constructed using highly correlated gene pairs, for example, pairs having Spearman's correlation coefficients  $\geq 0.9$  (positive correlations), or  $\leq -0.9$  (negative correlations). Thus, the nodes of this coexpression network are *B. rapa* genes, and the edges represent correlation in expression. The coexpression network was randomized 100 times by rewiring the edges while holding the nodes and their subgenome assignments unchanged. In other words, all edges were broken and randomly reconnecting, preserving the degree of every node (Pérez-Bercoff et al. 2011). The distributions of inter-subgenome and intra-subgenome edge counts are shown in Figure 4.

### Association between recent selective sweeps in *B. rapa* and subgenomes origin

*B. rapa* genes were divided into those in the regions of selective sweeps detected by SweeD (Pavlidis et al. 2013) in either turnip, toria, Indian sarson, pak choi, or Chinese cabbage (vegetable types of *B. rapa*) and those showing no such signatures (Qi et al. 2017, 2021). We tested whether particular subgenomes (posterior probability  $\geq 0.95$ ) were unusually likely or unlikely to have experienced a selective sweep using  $\chi^2$  test. The association plot as shown in Supplemental Figure S7 was visualized using the vcd package version 1.4-4 in R 3.6.0 (Meyer et al. 2006; Zeileis et al. 2007; R Core Team 2019).

### Data access

The assembled *Crambe hispanica* genome (v1.1) generated in this study has been submitted to the NCBI BioProject database (<https://www.ncbi.nlm.nih.gov/bioproject/>) under accession number JABFOD000000000. Raw RNA-seq files from *C. hispanica* have been submitted to the NCBI BioProject database under accession number PRJNA475309. The annotation of the *Crambe hispanica* v1.1 genome is available from CoGe (<https://genomevolution.org/coge/>) under accession number 58014. POInT input files, the inferred ancestral gene orders, POInT models, and assumed phylogenetic trees are included in the Supplemental Data and are available from figshare (<https://doi.org/10.6084/m9.figshare.12277832>) and from the POInT<sub>browse</sub> portal (<http://wgd.statgen.ncsu.edu/>).

### Competing interest statement

The authors declare no competing interests.

### Acknowledgments

This project was supported by a U.S. National Science Foundation (NSF) Division of Integrative Organismal Systems (IOS) grant NSF-IOS-1339156 (Y.H., M.E.M., P.P.E., H.A., R.S.A., J.D.W., X.Q., M.S.B., E.L., J.C.P., and G.C.C.), and by NSF Division of

Biological Infrastructure (DBI) grant NSF-DBI-1743442 and NSF IOS grant NSF-IOS-2023310 (E.L.). We thank the U.S. Department of Energy (DOE) Joint Genome Institute and the Brassicaceae Map Alignment Project (BMAP) consortium for allowing us access to the *Sinapis alba* genome. The work conducted by the U.S. Department of Energy Joint Genome Institute, a DOE Office of Science User Facility, is supported by the Office of Science of the U.S. Department of Energy under Contract No. DE-AC02-05CH11231. We thank A. Platts for assistance with our analyses and J.A. Birchler, R. Roberts, J. Thorne, and H. Ashrafi for helpful discussions.

### References

- Alger EI, Edger PP. 2020. One subgenome to rule them all: underlying mechanisms of subgenome dominance. *Curr Opin Plant Biol* **54**: 108–113. doi:10.1016/j.pbi.2020.03.004
- Alix K, Gérard PR, Schwarzacher T, Heslop-Harrison JSP. 2017. Polyploidy and interspecific hybridization: partners for adaptation, speciation and evolution in plants. *Ann Bot* **120**: 183–194. doi:10.1093/aob/mcx079
- Arabidopsis Interactome Mapping Consortium. 2011. Evidence for network evolution in an *Arabidopsis* interactome map. *Science* **333**: 988–993. doi:10.1126/science.1201609
- Arias T, Pires JC. 2012. A fully resolved chloroplast phylogeny of the brassica crops and wild relatives (Brassicaceae: Brassicaceae): novel clades and potential taxonomic implications. *Taxon* **61**: 980–988. doi:10.1002/tax.615005
- Aury JM, Jaillon O, Duret L, Noel B, Jubin C, Porcel BM, Ségurens B, Daubin V, Anthouard V, Aiach N, et al. 2006. Global trends of whole-genome duplications revealed by the ciliate *Paramecium tetraurelia*. *Nature* **444**: 171–178. doi:10.1038/nature05230
- Bao W, Kojima KK, Kohany O. 2015. Repbase Update, a database of repetitive elements in eukaryotic genomes. *Mob DNA* **6**: 11. doi:10.1186/s13100-015-0041-9
- Bastian M, Heymann S, Jacomy M. 2009. Gephi: an open source software for exploring and manipulating networks. In *International AAAI conference on weblogs and social media* (ed. Adar E, et al.), Vol. 3, no. 1, pp. 361–362. AAAI Press, Menlo Park, CA.
- Bekaert M, Edger PP, Hudson CM, Pires JC, Conant GC. 2012. Metabolic and evolutionary costs of herbivory defense: systems biology of glucosinolate synthesis. *New Phytol* **196**: 596–605. doi:10.1111/j.1469-8137.2012.04302.x
- Birchler JA, Veitia RA. 2007. The gene balance hypothesis: from classical genetics to modern genomics. *Plant Cell* **19**: 395–402. doi:10.1105/tpc.106.049338
- Birchler JA, Veitia RA. 2012. Gene balance hypothesis: connecting issues of dosage sensitivity across biological disciplines. *Proc Natl Acad Sci* **109**: 14746–14753. doi:10.1073/pnas.1207726109
- Birchler JA, Veitia RA. 2014. The gene balance hypothesis: dosage effects in plants. In *Plantepigenetics and epigenomics: methods and protocols* (ed. Spillane C, McKeown PC), pp. 25–32. Humana Press, Totowa, NJ.
- Birchler JA, Riddle NC, Auger DL, Veitia RA. 2005. Dosage balance in gene regulation: biological implications. *Trends Genet* **21**: 219–226. doi:10.1016/j.tig.2005.02.010
- Birchler JA, Johnson AF, Veitia RA. 2016. Kinetics genetics: incorporating the concept of genomic balance into an understanding of quantitative traits. *Plant Sci* **245**: 128–134. doi:10.1016/j.plantsci.2016.02.002
- Bird KA, VanBuren R, Puzey JR, Edger PP. 2018. The causes and consequences of subgenome dominance in hybrids and recent polyploids. *New Phytol* **220**: 87–93. doi:10.1111/nph.15256
- Blanc G, Wolfe KH. 2004. Functional divergence of duplicated genes formed by polyploidy during *Arabidopsis* evolution. *Plant Cell* **16**: 1679–1691. doi:10.1105/tpc.021410
- Blanc-Mathieu R, Perfus-Barbeoch L, Aury JM, Da Rocha M, Gouzy J, Sallet E, Martin-Jimenez C, Bailly-Bechet M, Castagnone-Sereno P, Flot JF, et al. 2017. Hybridization and polyploidy enable genomic plasticity without sex in the most devastating plant-parasitic nematodes. *PLoS Genet* **13**: e1006777. doi:10.1371/journal.pgen.1006777
- Campbell MS, Law MY, Holt C, Stein JC, Moghe GD, Hufnagel DE, Lei J, Achawanantakun R, Jiao D, Lawrence CJ, et al. 2014. MAKER-P: a tool kit for the rapid creation, management, and quality control of plant genome annotations. *Plant Physiol* **164**: 513–524. doi:10.1104/pp.113.230144
- Carlsson AS, Clayton D, Toonen M, Salentijn EMJ. 2007. *Oil crop platforms for industrial uses: outputs from the EPOBIO project*. (ed. Bowles D). CPL

- Press, Tall Gables, The Sydings, Speen, Newbury, Berks, UK. <https://edepot.wur.nl/421496>.
- Cheng F, Wu J, Fang L, Sun S, Liu B, Lin K, Bonnema G, Wang X. 2012. Biased gene fractionation and dominant gene expression among the subgenomes of *Brassica rapa*. *PLoS One* **7**: e36442. doi:10.1371/journal.pone.0036442
- Cheng F, Wu J, Wang X. 2014. Genome triplication drove the diversification of *Brassica* plants. *Hortic Res* **1**: 14024. doi:10.1038/hortres.2014.24
- Cheng CY, Krishnakumar V, Chan AP, Thibaud-Nissen F, Schobel S, Town CD. 2017. Araport11: a complete reannotation of the *Arabidopsis thaliana* reference genome. *Plant J* **89**: 789–804. doi:10.1111/tpj.13415
- Codonier FM, Fares MA. 2008. Why should we care about molecular coevolution? *Evol Bioinforma* **2008**: 237–246.
- Conant GC. 2014. Comparative genomics as a time machine: how relative gene dosage and metabolic requirements shaped the time-dependent resolution of yeast polyploidy. *Mol Biol Evol* **31**: 3184–3193. doi:10.1093/molbev/msu250
- Conant GC, Wagner A. 2002. Genomehistory: a software tool and its application to fully sequenced genomes. *Nucleic Acids Res* **30**: 3378–3386. doi:10.1093/nar/gkf449
- Conant GC, Wolfe KH. 2006. Functional partitioning of yeast co-expression networks after genome duplication. *PLoS Biol* **4**: e109. doi:10.1371/journal.pbio.0040109
- Conant GC, Wolfe KH. 2007. Increased glycolytic flux as an outcome of whole-genome duplication in yeast. *Mol Syst Biol* **3**: 129. doi:10.1038/msb4100170
- Conant GC, Wolfe KH. 2008a. Probabilistic cross-species inference of orthologous genomic regions created by whole-genome duplication in yeast. *Genetics* **179**: 1681–1692. doi:10.1534/genetics.107.074450
- Conant GC, Wolfe KH. 2008b. Turning a hobby into a job: how duplicated genes find new functions. *Nat Rev Genet* **9**: 938–950. doi:10.1038/nrg2482
- Conant GC, Birchler JA, Pires JC. 2014. Dosage, duplication, and diploidization: clarifying the interplay of multiple models for duplicate gene evolution over time. *Curr Opin Plant Biol* **19**: 91–98. doi:10.1016/j.pbi.2014.05.008
- Costello R, Emms DM, Kelly S. 2020. Gene duplication accelerates the pace of protein gain and loss from plant organelles. *Mol Biol Evol* **37**: 969–981. doi:10.1093/molbev/msz275
- de Oliveira Dal'Molin CG, Quek LE, Palfreyman RW, Brumbley SM, Nielsen LK. 2010. AraGEM, a genome-scale reconstruction of the primary metabolic network in *Arabidopsis*. *Plant Physiol* **152**: 579–589. doi:10.1104/pp.109.148817
- De Smet R, Adams KL, Vandepoele K, Van Montagu MCE, Maere S, Van de Peer Y. 2013. Convergent gene loss following gene and genome duplications creates single-copy families in flowering plants. *Proc Natl Acad Sci* **110**: 2898–2903. doi:10.1073/pnas.1300127110
- Edger PP, Heide-Fischer HM, Bekaert M, Rota J, Glöckner G, Platts AE, Heckel DG, Der JP, Wafuła EK, Tang M, et al. 2015. The butterfly plant arms-race escalated by gene and genome duplications. *Proc Natl Acad Sci* **112**: 8362–8366. doi:10.1073/pnas.1503926112
- Edger PP, Smith RD, McKain MR, Cooley AM, Vallejo-Marín M, Yuan YW, Bewick AJ, Ji L, Platts AE, Bowman MJ, et al. 2017. Subgenome dominance in an interspecific hybrid, synthetic allopolyploid, and a 140-year-old naturally established neo-allopolyploid monkeyflower. *Plant Cell* **29**: 2150–2167. doi:10.1105/tpc.17.00010
- Emery M, Willis MMS, Hao Y, Barry K, Oakgrove K, Peng Y, Schmutz J, Lyons E, Pires JC, Edger PP, et al. 2018. Preferential retention of genes from one parental genome after polyploidy illustrates the nature and scope of the genomic conflicts induced by hybridization. *PLoS Genet* **14**: e1007267. doi:10.1371/journal.pgen.1007267
- Evangelisti AM, Conant GC. 2010. Nonrandom survival of gene conversions among yeast ribosomal proteins duplicated through genome doubling. *Genome Biol Evol* **2**: 826–834. doi:10.1093/gbe/evq067
- Freeling M. 2009. Bias in plant gene content following different sorts of duplication: tandem, whole-genome, segmental, or by transposition. *Annu Rev Plant Biol* **60**: 433–453. doi:10.1146/annurev.arplant.043008.092122
- Freeling M, Woodhouse MR, Subramaniam S, Turco G, Lisch D, Schnable JC. 2012. Fractionation mutagenesis and similar consequences of mechanisms removing dispensable or less-expressed DNA in plants. *Curr Opin Plant Biol* **15**: 131–139. doi:10.1016/j.pbi.2012.01.015
- Fruchterman TMJ, Reingold EM. 1991. Graph drawing by force-directed placement. *Softw Pract Exp* **21**: 1129–1164. doi:10.1002/spe.4380211102
- Gong L, Salmon A, Yoo MJ, Grupp KK, Wang Z, Paterson AH, Wendel JF. 2012. The cytonuclear dimension of allopolyploid evolution: an example from cotton using rubisco. *Mol Biol Evol* **29**: 3023–3036. doi:10.1093/molbev/mss110
- Goodstein DM, Shu S, Howson R, Neupane R, Hayes RD, Fazo J, Mitros T, Dirks W, Hellsten U, Putnam N, et al. 2012. Phytozome: a comparative platform for green plant genomics. *Nucleic Acids Res* **40**: D1178–D1186. doi:10.1093/nar/gkr944
- Hakes L, Pinney JW, Lovell SC, Oliver SG, Robertson DL. 2007. All duplicates are not equal: the difference between small-scale and genome duplication. *Genome Biol* **8**: R209. doi:10.1186/gb-2007-8-10-r209
- Hollister JD. 2015. Polyploidy: adaptation to the genomic environment. *New Phytol* **205**: 1034–1039. doi:10.1111/nph.12939
- Hu Y. 2006. Efficient, high-quality force-directed graph drawing. *Math J* **10**: 37–71.
- Kacser H, Burns JA. 1981. The molecular basis of dominance. *Genetics* **97**: 639–666.
- Kirkpatrick S, Gelatt CDJ, Vecchi MP. 1983. Optimization by simulated annealing. *Science* **220**: 671–680. doi:10.1126/science.220.4598.671
- Koren S, Walenz BP, Berlin K, Miller JR, Bergman NH, Phillippy AM. 2017. Canu: scalable and accurate long-read assembly via adaptive *k*-mer weighting and repeat separation. *Genome Res* **27**: 722–736. doi:10.1101/gr.215087.116
- Korf I. 2004. Gene finding in novel genomes. *BMC Bioinformatics* **5**: 59. doi:10.1186/1471-2105-5-59
- Lagercrantz U. 1998. Comparative mapping between *Arabidopsis thaliana* and *Brassica nigra* indicates that Brassica genomes have evolved through extensive genome replication accompanied by chromosome fusions and frequent rearrangements. *Genetics* **150**: 1217–1228.
- Langmead B, Salzberg SL. 2012. Fast gapped-read alignment with Bowtie 2. *Nat Methods* **9**: 357–359. doi:10.1038/nmeth.1923
- Lazzeri L, De Mattei F, Bucelli F, Palmieri S. 1997. *Crambe* oil—A potential new hydraulic oil and quenchant. *Ind Lubr Tribol* **49**: 71–77. doi:10.1108/00368799710163893
- Liang Z, Schnable JC. 2018. Functional divergence between subgenomes and gene pairs after whole genome duplications. *Mol Plant* **11**: 388–397. doi:10.1016/j.molp.2017.12.010
- Liu S, Liu Y, Yang X, Tong C, Edwards D, Parkin IA, Zhao M, Ma J, Yu J, Huang S, et al. 2014. The *Brassica oleracea* genome reveals the asymmetrical evolution of polyploid genomes. *Nat Commun* **5**: 3930. doi:10.1038/ncomms4930
- Lukens LN, Quijada PA, Udall J, Pires JC, Schranz ME, Osborn TC. 2004. Genome redundancy and plasticity within ancient and recent *Brassica* crop species. *Biol J Linn Soc* **82**: 665–674. doi:10.1111/j.1095-8312.2004.00352.x
- Lyons E, Freeling M. 2008. How to usefully compare homologous plant genes and chromosomes as DNA sequences. *Plant J* **53**: 661–673. doi:10.1111/j.1365-3113X.2007.03326.x
- Lyons E, Pedersen B, Kane J, Alam M, Ming R, Tang H, Wang X, Bowers J, Paterson A, Lisch D, et al. 2008a. Finding and comparing syntenic regions among *Arabidopsis* and the outgroups papaya, poplar, and grape: CoGe with rosids. *Plant Physiol* **148**: 1772–1781. doi:10.1104/pp.108.124867
- Lyons E, Pedersen B, Kane J, Freeling M. 2008b. The value of nonmodel genomes and an example using SynMap within CoGe to dissect the hexaploidy that predates the rosids. *Trop Plant Biol* **1**: 181–190. doi:10.1007/s12042-008-9017-y
- Lysak MA. 2009. Comparative cytogenetics of wild crucifers (Brassicaceae). In *Biology and breeding of crucifers* (ed. Gupta SK), pp. 177–205. CRC Press, Boca Raton, FL.
- Lysak MA, Koch MA, Pecinka A, Schubert I. 2005. Chromosome triplication found across the tribe Brassiceae. *Genome Res* **15**: 516–525. doi:10.1101/gr.3531105
- Maere S, De Bodt S, Raes J, Casneuf T, Van Montagu M, Kuiper M, Van de Peer Y. 2005. Modeling gene and genome duplications in eukaryotes. *Proc Natl Acad Sci* **102**: 5454–5459. doi:10.1073/pnas.0501102102
- Makino T, McLysaght A. 2010. Ohnologs in the human genome are dosage balanced and frequently associated with disease. *Proc Natl Acad Sci* **107**: 9270–9274. doi:10.1073/pnas.0914697107
- Makino T, McLysaght A. 2012. Positionally biased gene loss after whole genome duplication: evidence from human, yeast, and plant. *Genome Res* **22**: 2427–2435. doi:10.1101/gr.131953.111
- McClintock B. 1984. The significance of responses of the genome to challenge. *Science* **226**: 792–801. doi:10.1126/science.15739260
- Merico A, Sulo P, Piškur J, Compagno C. 2007. Fermentative lifestyle in yeasts belonging to the *Saccharomyces* complex. *FEBS J* **274**: 976–989. doi:10.1111/j.1742-4658.2007.05645.x
- Meyer D, Zeileis A, Hornik K. 2006. The strucplot framework: visualizing multi-way contingency tables with vcd. *J Stat Softw* **17**: 1–48. doi:10.18637/jss.v017.i03
- Mi H, Muruganujan A, Ebert D, Huang X, Thomas PD. 2019. PANTHER version 14: more genomes, a new PANTHER GO-slim and improvements in enrichment analysis tools. *Nucleic Acids Res* **47**: D419–D426. doi:10.1093/nar/gky1038
- Notredame C, Higgins DG, Heringa J. 2000. T-coffee: a novel method for fast and accurate multiple sequence alignment. *J Mol Biol* **302**: 205–217. doi:10.1006/jmbi.2000.4042



- Ohno S. 1970. *Evolution by gene duplication*. Springer-Verlag, New York.
- One Thousand Plant Transcriptomes Initiative. 2019. One thousand plant transcriptomes and the phylogenomics of green plants. *Nature* **574**: 679–685. doi:10.1038/s41586-019-1693-2
- Parkin IAP, Gulden SM, Sharpe AG, Lukens L, Trick M, Osborn TC, Lydiat DJ. 2005. Segmental structure of the *Brassica napus* genome based on comparative analysis with *Arabidopsis thaliana*. *Genetics* **171**: 765–781. doi:10.1534/genetics.105.042093
- Parkin IAP, Koh C, Tang H, Robinson SJ, Kagale S, Clarke WE, Town CD, Nixon J, Krishnakumar V, Bidwell SL, et al. 2014. Transcriptome and methylome profiling reveals relics of genome dominance in the mesopolyploid *Brassica oleracea*. *Genome Biol* **15**: R77. doi:10.1186/gb-2014-15-6-r77
- Paterson AH. 2005. Polyploidy, evolutionary opportunity, and crop adaptation. In *Genetics of adaptation* (ed. Mauricio R), pp. 191–196. Springer, Dordrecht, Netherlands.
- Pavlidis P, Živković D, Stamatakis A, Alachiotis N. 2013. Sweed: likelihood-based detection of selective sweeps in thousands of genomes. *Mol Biol Evol* **30**: 2224–2234. doi:10.1093/molbev/mst112
- Pérez-Bercoff A, McLysaght A, Conant GC. 2011. Patterns of indirect protein interactions suggest a spatial organization to metabolism. *Mol Biosyst* **7**: 3056–3064. doi:10.1039/c1mb05168g
- Pertea M, Pertea GM, Antonescu CM, Chang TC, Mendell JT, Salzberg SL. 2015. StringTie enables improved reconstruction of a transcriptome from RNA-seq reads. *Nat Biotechnol* **33**: 290–295. doi:10.1038/nbt.3122
- Qi X, An H, Ragsdale AP, Hall TE, Gutenkunst RN, Pires JC, Barker MS. 2017. Genomic inferences of domestication events are corroborated by written records in *Brassica rapa*. *Mol Ecol* **26**: 3373–3388. doi:10.1111/mec.14131
- Qi X, An H, Hall TE, Di C, Blischak PD, McKibben MTW, Hao Y, Conant GC, Pires JC, Barker MS. 2021. Genes derived from ancient polyploidy have higher genetic diversity and are associated with domestication in *Brassica rapa*. *New Phytol* **230**: 372–386. doi:10.1111/nph.17194
- Qiu Y, Tay YV, Ruan Y, Adams KL. 2020. Divergence of duplicated genes by repeated partitioning of splice forms and subcellular localization. *New Phytol* **225**: 1011–1022. doi:10.1111/nph.16148
- R Core Team. 2019. *R: a language and environment for statistical computing*. R Foundation for Statistical Computing, Vienna. <https://www.R-project.org/>
- Renny-Byfield S, Gong L, Gallagher JP, Wendel JF. 2015. Persistence of sub-genomes in paleopolyploid cotton after 60 my of evolution. *Mol Biol Evol* **32**: 1063–1071. doi:10.1093/molbev/msv001
- Rudloff E, Wang Y. 2011. Crambe. In *Wild crop relatives: genomic and breeding resources: oilseeds* (ed. Kole C), pp. 97–116. Springer, Heidelberg, Germany.
- Scannell DR, Frank AC, Conant GC, Byrne KP, Woolfit M, Wolfe KH. 2007. Independent sorting-out of thousands of duplicated gene pairs in two yeast species descended from a whole-genome duplication. *Proc Natl Acad Sci* **104**: 8397–8402. doi:10.1073/pnas.0608218104
- Schnable JC, Springer NM, Freeling M. 2011. Differentiation of the maize subgenomes by genome dominance and both ancient and ongoing gene loss. *Proc Natl Acad Sci* **108**: 4069–4074. doi:10.1073/pnas.1101368108
- Schoonmaker A, Hao Y, Bird McKDM, Conant GC. 2020. A single, shared triploidy in three species of parasitic nematodes. *G3 (Bethesda)* **10**: 225–233. doi:10.1534/g3.119.400650
- Schranz ME, Lysak MA, Mitchell-Olds T. 2006. The ABC's of comparative genomics in the Brassicaceae: building blocks of crucifer genomes. *Trends Plant Sci* **11**: 535–542. doi:10.1016/j.tplants.2006.09.002
- Scienski K, Fay JC, Conant GC. 2015. Patterns of gene conversion in duplicated yeast histones suggest strong selection on a coadapted macromolecular complex. *Genome Biol Evol* **7**: 3249–3258. doi:10.1093/gbe/evv216
- Seoighe C, Wolfe KH. 1998. Extent of genomic rearrangement after genome duplication in yeast. *Proc Natl Acad Sci* **95**: 4447–4452. doi:10.1073/pnas.95.8.4447
- Sharbrough J, Conover JL, Tate JA, Wendel JF, Sloan DB. 2017. Cytonuclear responses to genome doubling. *Am J Bot* **104**: 1277–1280. doi:10.3732/ajb.1700293
- Simão FA, Waterhouse RM, Ioannidis P, Kriventseva EV, Zdobnov EM. 2015. BUSCO: assessing genome assembly and annotation completeness with single-copy orthologs. *Bioinformatics* **31**: 3210–3212. doi:10.1093/bioinformatics/btv351
- Smit A, Hubley R, Green P. 2015. RepeatMasker Open-4.0. <http://www.repeatmasker.org/>.
- Smukowski Heil CS, DeSevo CG, Pai DA, Tucker CM, Hoang ML, Dunham MJ. 2017. Loss of heterozygosity drives adaptation in hybrid yeast. *Mol Biol Evol* **34**: 1596–1612. doi:10.1093/molbev/msx098
- Soltis PS, Soltis DE. 2012. *Polyploidy and genome evolution*. Springer-Verlag, Berlin, Germany.
- Stanke M, Waack S. 2003. Gene prediction with a hidden Markov model and a new intron submodel. *Bioinformatics* **19**: ii215–ii225. doi:10.1093/bioinformatics/btg1080
- Stark C, Breitkreutz BJ, Chatr-Aryamontri A, Boucher L, Oughtred R, Livstone MS, Nixon J, Van Auken K, Wang X, Shi X, et al. 2011. The BioGRID interaction database: 2011 update. *Nucleic Acids Res* **39**: D698–D704. doi:10.1093/nar/gkq1116
- Sukeena JM, Galicia CA, Wilson JD, McGinn T, Boughman JW, Robison BD, Postlethwait JH, Braasch I, Stenkamp DL, Fuerst PG. 2016. Characterization and evolution of the spotted gar retina. *J Exp Zool Part B Mol Dev Evol* **326**: 403–421. doi:10.1002/jez.b.22710
- Tang H, Woodhouse MR, Cheng F, Schnable JC, Pedersen BS, Conant G, Wang X, Freeling M, Pires JC. 2012. Altered patterns of fractionation and exon deletions in *Brassica rapa* support a two-step model of paleohexaploidy. *Genetics* **190**: 1563–1574. doi:10.1534/genetics.111.137349
- Thomas BC, Pedersen B, Freeling M. 2006. Following tetraploidy in an *Arabidopsis* ancestor, genes were removed preferentially from one homeolog leaving clusters enriched in dose-sensitive genes. *Genome Res* **16**: 934–946. doi:10.1101/gr.4708406
- Van de Peer Y, Maere S, Meyer A. 2009. The evolutionary significance of ancient genome duplications. *Nat Rev Genet* **10**: 725–732. doi:10.1038/nrg2600
- Van de Peer Y, Mizrahi E, Marchal K. 2017. The evolutionary significance of polyploidy. *Nat Rev Genet* **18**: 411–424. doi:10.1038/nrg.2017.26
- van Hoek MJA, Hogeweg P. 2009. Metabolic adaptation after whole genome duplication. *Mol Biol Evol* **26**: 2441–2453. doi:10.1093/molbev/msp160
- Walker BJ, Abeel T, Shea T, Priest M, Abouelliel A, Sakthikumar S, Cuomo CA, Zeng Q, Wortman J, Young SK, et al. 2014. Pilon: an integrated tool for comprehensive microbial variant detection and genome assembly improvement. *PLoS One* **9**: e112963. doi:10.1371/journal.pone.0112963
- Wang X, Wang H, Wang J, Sun R, Wu J, Liu S, Bai Y, Mun JH, Bancroft I, Cheng F, et al. 2011. The genome of the mesopolyploid crop species *Brassica rapa*. *Nat Genet* **43**: 1035–1039. doi:10.1038/ng.919
- Warwick SI, Gugel RK. 2003. Genetic variation in the *Crambe abyssinica* – *C. hispanica* – *C. glabrata* complex. *Genet Resour Crop Evol* **50**: 291–305. doi:10.1007/s10722-004-2910-9
- Wendel JF, Lisch D, Hu G, Mason AS. 2018. The long and short of doubling down: polyploidy, epigenetics, and the temporal dynamics of genome fractionation. *Curr Opin Genet Dev* **49**: 1–7. doi:10.1016/j.gde.2018.01.004
- Wick RR, Schultz MB, Zobel J, Holt KE. 2015. Bandage: interactive visualization of *de novo* genome assemblies. *Bioinformatics* **31**: 3350–3352. doi:10.1093/bioinformatics/btv383
- Wolfe KH, Shields DC. 1997. Molecular evidence for an ancient duplication of the entire yeast genome. *Nature* **387**: 708–713. doi:10.1038/42711
- Woodhouse MR, Cheng F, Pires JC, Lisch D, Freeling M, Wang X. 2014. Origin, inheritance, and gene regulatory consequences of genome dominance in polyploids. *Proc Natl Acad Sci* **111**: 5283–5288. doi:10.1073/pnas.1402475111
- Xie T, Zhang FG, Zhang HY, Wang XT, Hu JH, Wu XM. 2019. Biased gene retention during diploidization in *Brassica* linked to three-dimensional genome organization. *Nat Plants* **5**: 822–832. doi:10.1038/s41477-019-0479-8
- Yang Z. 2007. PAML 4: phylogenetic analysis by maximum likelihood. *Mol Biol Evol* **24**: 1586–1591. doi:10.1093/molbev/msm088
- Yoo MJ, Liu X, Pires JC, Soltis PS, Soltis DE. 2014. Nonadditive gene expression in polyploids. *Annu Rev Genet* **48**: 485–517. doi:10.1146/annurev-genet-120213-092159
- Zeileis A, Meyer D, Hornik K. 2007. Residual-based shadings for visualizing (conditional) independence. *J Comput Graph Stat* **16**: 507–525. doi:10.1198/106186007X237856
- Zhao M, Zhang B, Lisch D, Ma J. 2017. Patterns and consequences of subgenome differentiation provide insights into the nature of paleopolyploidy in plants. *Plant Cell* **29**: 2974–2994. doi:10.1105/tpc.17.00595
- Zheng C, Swenson K, Lyons E, Sankoff D. 2011. OMG! orthologs in multiple genomes – competing graph-theoretical formulations. In *International workshop on algorithms in bioinformatics* (ed. Przytycka TM, Sagot MF), pp. 364–375. Springer, Berlin/Heidelberg.
- Zheng C, Chen E, Albert VA, Lyons E, Sankoff D. 2013. Ancient eudicot hexaploidy meets ancestral eudicot gene order. *BMC Genomics* **14**: S3. doi:10.1186/1471-2164-14-S7-S3

Received August 10, 2020; accepted in revised form March 5, 2021.





## The contributions from the progenitor genomes of the mesopolyploid Brassiceae are evolutionarily distinct but functionally compatible

Yue Hao, Makenzie E. Mabry, Patrick P. Edger, et al.

*Genome Res.* published online April 16, 2021

Access the most recent version at doi:[10.1101/gr.270033.120](https://doi.org/10.1101/gr.270033.120)

---

**Supplemental Material** <http://genome.cshlp.org/content/suppl/2021/04/16/gr.270033.120.DC1>

**P<P** Published online April 16, 2021 in advance of the print journal.

**Open Access** Freely available online through the *Genome Research* Open Access option.

**Creative Commons License** This article, published in *Genome Research*, is available under a Creative Commons License (Attribution 4.0 International), as described at <http://creativecommons.org/licenses/by/4.0/>.

**Email Alerting Service** Receive free email alerts when new articles cite this article - sign up in the box at the top right corner of the article or [click here](#).

---

---

Advance online articles have been peer reviewed and accepted for publication but have not yet appeared in the paper journal (edited, typeset versions may be posted when available prior to final publication). Advance online articles are citable and establish publication priority; they are indexed by PubMed from initial publication. Citations to Advance online articles must include the digital object identifier (DOIs) and date of initial publication.

---

To subscribe to *Genome Research* go to:  
<https://genome.cshlp.org/subscriptions>

---